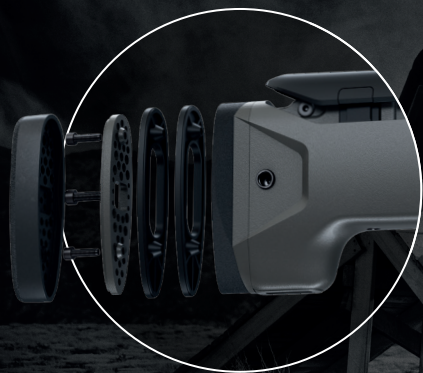


sako S20

ACCESSORIES



5 MM SPACER SETS
are available for
adjusting length
of pull.



MUZZLE BRAKES
are available for
different barrel
contours.



QD SLING SWIVELS
are compatible with
Sako S20's or any other
rifle's QD sling mounts.

sako S20 ACCESSORIES

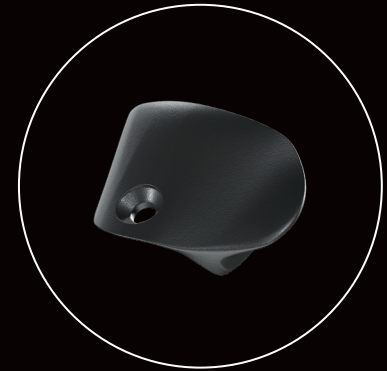


SCOPE MOUNT

Our high-duty performance scope mount, made from extremely strong aircraft-grade aluminium and steel, provides a strong hold for a rigid scope on the Picatinny rail. It comes in a variety of different ring heights (low, medium and high) and ring diameters (1 in, 30 mm, 34 mm and 36 mm).

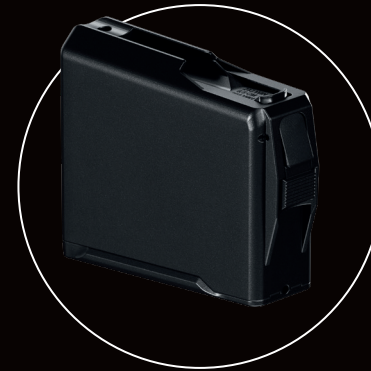
THUMB REST

With the S20 thumb rest, you can easily improve your shooting position by placing your thumb on either the left or the right side of the precision stock. It enables a more secure and fixed hand position for more accurate index finger trigger control.



BARRICADE STOP

The barricade stop allows the shooter to support the rifle on barricades or obstacles without damaging the magazine and achieving a steadier position for maximum precision. It can be attached to any M-LOK compatible forend or hand guard.



10-ROUND MAGAZINE

If you want extended magazine capacity, 10 round (7 Magnum) magazines are available. Sako S20 magazines were designed to support reloaders with their longer maximum cartridge length and to safeguard the bullet from recoil damage.



MONOPOD

The M-LOK compatible monopod provides further stability and support when you need that extra precision. You can quickly engage the desired height with one push of a button. The mount also has a threaded micro adjustment so that you can fine-tune your rifle's elevation by rotating the pod.

FOREND AND REAR STOCK

The takedown stock of the Sako S20 allows for great modularity, so that your rifle can be configured according to your preferences with different rearstocks and forends.



OTHER ACCESSORIES: ARCA RAILS are available for forend M-LOK mounts. 20MOA SCOPE MOUNTS are available for the rifle's Picatinny rail.

www.sako.fi